

PETREX-CNT®

Pipe system for petrol stations

Flexible pipe system for automotive fuels in petrol station construction

System advantages

- fast and simple to install
- environmentally safe
- cost effective

General Description

PETREX-CNT® has been specially developed as a buried pipe for underground service in petrol stations.

Fast and easy installation without welding, early completion and minimal downtime on retrofits are only some of the major advantages of PETREX-CNT®.

Construction

PETREX-CNT® is a single-walled flexible corrugated pipe system with stainless steel inner pipe and polyethylene outer casing. The stainless steel primary pipe is not only safe from corrosion but is also a permeation proof barrier that allows handling the future generation of automotive fuels.

Fields of application*

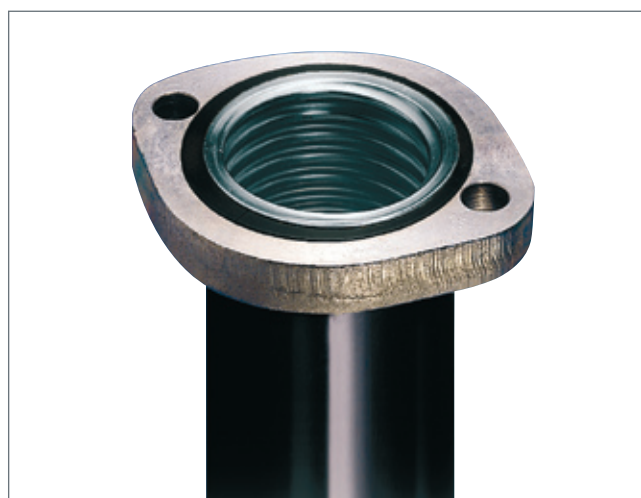
PETREX-CNT® pipes can be used for:

- Suction pipes
- Pressure pipes
- Fill pipes
- Stage I / Stage II
- Vent pipes

* Subject to compliance with local and national requirements

Sizes and Pressure ratings

Nominal bore: DN 20 (3/4") to DN 100 (4") Max. operating pressure: up to + 6.0 bar (60 PSIG) or any pressure below atmospheric pressure in the suction modus.

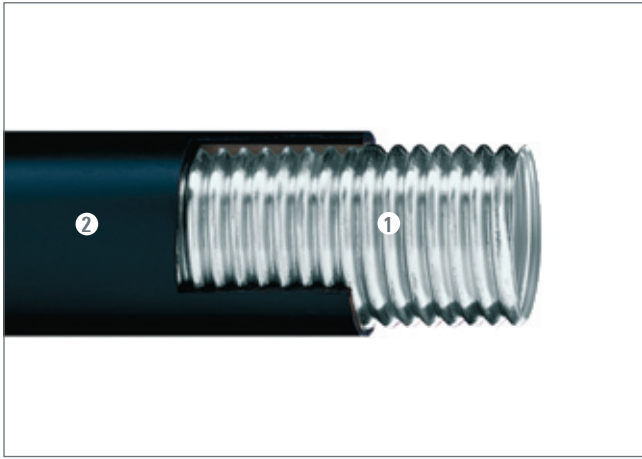


Connection method

Mechanical connection ending with an oval or round flange end. There are two modes of making the mechanical connection: a classical threaded pipe type with caulking or a specially low cost one that however, requires a flaring tool.

Installation

PETREX-CNT® is available ex works in lengths up to 500 m in coils. The corrugated primary pipe gives this pipe extra-ordinarily good flexibility for ease of installation. PETREX-CNT® can easily be cut to the required lengths on site and – where necessary – bent at very tight radii.



PETREX-CNT® construction:

- 1 corrugated primary stainless steel pipe
- 2 PE-LD outer casing

Technical data of PETREX-CNT® pipes, selection of pipe size for petrol station application

Type designation:		CNT 21/31	CNT 30/39	CNT 48/60	CNT 60/71	CNT 83/105	CNT 98/120
material:		primary pipe: stainless steel outer casing: PE-LD					
nominal bore:		DN 20 (¾")	DN 25 (1")	DN 40 (1 ½")	DN 50 (2")	DN 80 (3")	DN 100 (4")
dimensions:	• internal diameter	21 mm	30 mm	48 mm	60 mm	83 mm	98 mm
	• external diameter	31 mm	39 mm	60 mm	71 mm	105 mm	120 mm
	• volume primary pipe (litres/lin. m)	0.37	0.8	2.00	3.00	6.00	8.40
mean bending radius:		200 mm	200 mm	300 mm	400 mm	700 mm	800 mm
weight:	(kg/lin. m)	0.4	0.6	1.8	2.3	4.6	5.1
available type of connectors:	• screwed type connection	•	•	•	•		
	• flared type connection, oval flange		•	•	•		
	• modular system with threaded end*	•	•	•	•	•	
	• modular system, round flange	•	•	•	•	•	
Recommendation for use**:	• suction line		•	•	•	•	
	• pressure line		•	•	•		
	• Stage 1 / Stage 2	•	•	•	•	•	•
	• gravity fill pipe					•	•
	• vent pipe						

* NPT or Whitworth (R)

** Subject to compliance with local and national regulation

All technical data subject to change.

Brugg Rohrsystem AG
 Industriestrasse 39
 CH-5314 Kleindöttingen
 phone +41 (0)56 268 78 78
 fax +41 (0)56 268 78 79
 pipesystems@brugg.com
 www.pipesystems.com

BRUGG Rohrsysteme GmbH
 Adolf-Oesterheld-Straße 31
 D-31515 Wunstorf
 phone +49 (0)50 31 170-0
 fax +49 (0)50 31 170-170
 info@brugg.de
 www.brugg.de