



# Teguflex C BL 100 DN 25-DN 150

## Flange qualities

Yellow cromated steel flanges are supplied as standard, however other types are available: stainless steel, hot dipped galvanized, etc.

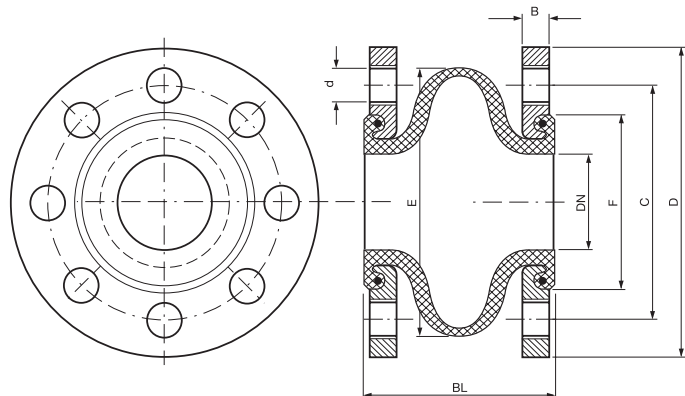
## Flange measurements

DN 32-150 DIN 2501 PN6/10/16

**Note:** Threaded holes! See table below (d).

(see Flange dimension table for details)

Other flange standards available. Please ask.



## Dimensions and movements

DN mm	BL mm	Eff.cross-sectional area Q(cm <sup>2</sup> )	(E) mm	(F) mm	(d)	Permissible movements				Max. vacuum		Weight		Spring Rates		
						Com- pression mm	Elon- gation mm	Lateral mm	An- gular	W/o support ring bar	With support ring bar	Incl. flange kg	Incl. Tie-rod flange kg	Com- pression Stiffness kg/cm	Elon- gation Stiffness kg/cm	Lateral Stiffness kg/cm
32	100	18/18	110	80	M16	30	20	30	15°	0.8	1.0	2.8	4.5	30	40	30
40	100	18	110	80	M16	30	20	30	15°	0.8	1.0	3.3	4.8	30	40	30
50	100	35	120	90	M16	30	20	30	15°	0.7	1.0	3.7	5.0	30	40	30
65	100	56	135	108	M16	30	20	30	15°	0.6	1.0	4.8	6.4	30	40	30
80	100	87	170	124	M16	30	20	30	15°	0.5	1.0	5.3	7.5	30	40	30
100	100	130	180	152	M16	30	20	30	15°	0.5	1.0	6.2	9.0	40	50	40
125	100	190	195	183	M16	30	20	30	15°	0.4	0.9	8.2	11.2	40	50	40
150	100	263	260	214	M20	30	20	30	15°	0.3	0.9	11.2	13.4	50	60	50

**Note:** Maximum values do not apply simultaneously. Stiffness values tolerance: +/- 20%.  
Other dimensions available. Please ask.

## Optional equipment

Vacuum rings, Flame guard, etc. are available.



97/23/CE



ISO 9001



ISO 14001



**Trelleborg Izarra, S.A.U.**

C/ San Vicente, 23 - E01440 Izarra (Alava) - Spain - Tel.: +34 945 437 000 - Fax: +34 945 437 007  
E-mail: izarra@trelleborg.com - E-mail: expansionjoints@trelleborg.com - www.trelleborg.com/expansionjoints

Distributor: