

Teguflex FFI DN 1100-DN 3200

Flange qualities

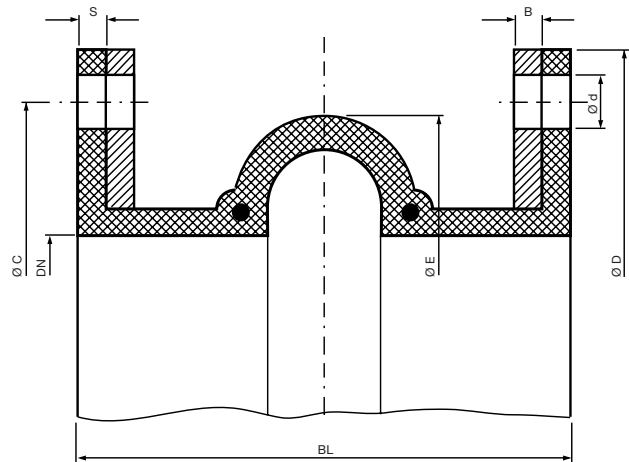
Painted steel flanges as standard. Other surface treatments also available. Please ask!

Flange measurements

DN 1100-DN 3200 DIN 2501 PN 6/10

(see Flange dimension table for details)

Other flange standards available. Please ask!



Dimensions and movements

DN mm	BL mm	Eff.cross-sectional area Q(cm ²)	(E) mm	(S) mm	Permissible movements				Vacuum bar	Weight Incl. flange kg	Spring rate		
					Compression mm	Elongation mm	Lateral mm	Angular			Compression Stiffness kg/cm	Elongation Stiffness kg/cm	Lateral Stiffness kg/cm
1100	350	11700	1260	20	35	30	20	3°	0.9	187	950	1230	1430
1200	350	13700	1360	20	35	30	20	3°	0.9	210	1015	1320	1545
1300	350	15800	1460	20	35	30	20	2.5°	0.9	245	1100	1430	1660
1400	350	18000	1570	25	35	30	20	2.5°	0.9	275	1145	1490	1720
1500	350	20600	1670	25	35	30	20	2°	0.8	302	1270	1655	1895
1600	350	23200	1760	20	35	30	20	2°	0.8	367	1400	1820	2045
1800	350	28400	1860	20	35	30	20	2°	0.8	424	1525	1985	2190
2000	350	35300	2170	20	35	30	20	1.5°	0.8	495	1650	2150	2320
2200	350	42250	2360	20	35	30	20	1.5°	0.8	585	1780	2315	2570
2400	350	49850	2570	25	35	30	20	1.5°	0.8	714	2035	2645	2950
2500	350	53900	2670	25	35	30	20	1°	0.8	800	2080	2700	2960
2600	350	58000	2770	25	35	30	20	1°	0.8	830	2160	2810	3140
2800	350	66900	2970	25	35	30	20	1°	0.8	872	2290	2975	3330
3000	350	76400	3190	35	35	30	20	1°	0.8	960	2540	3305	3710
3200	350	86500	3390	35	35	30	20	1°	0.8	1200	2795	3640	4095

Note: Maximum values do not apply simultaneously.
Other dimensions on request.



Trelleborg Izarra, S.A.U.

C/ San Vicente, 23 - E01440 Izarra (Alava) - Spain - Tel.: +34 945 437 000 - Fax: +34 945 437 007
E-mail: izarra@trelleborg.com - E-mail: expansionjoints@trelleborg.com - www.trelleborg.com/expansionjoints

Distributor: