



# Teguflex W BL 150-300 DN 25-DN 1000

## Flange qualities

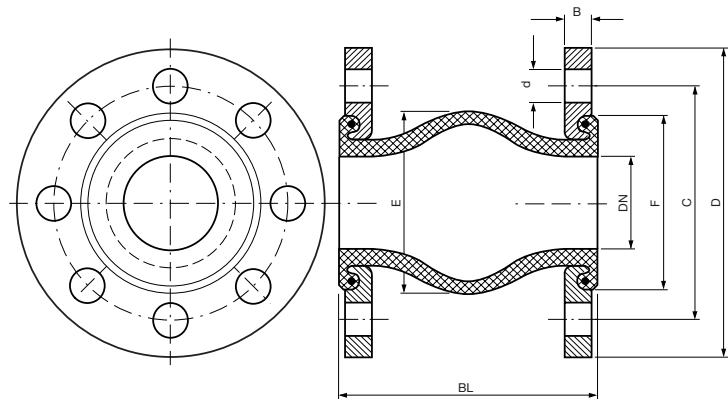
Yellow cromated steel flanges are supplied as standard, however other types are available: stainless steel, hot dipped galvanized, etc.

## Flange measurements

DN 32-DN 1000 DIN 2501 PN 6/10/16

(see Flange dimension table for details)

Other flange standards available. Please ask.



## Dimensions and movements

DN mm	BL mm	Eff.cross-sectional area Q(cm <sup>2</sup> )	(E) mm	(F) mm	Permissible movements				Max. vacuum		Weight		Spring rates		
					Compression mm	Elongation mm	Lateral mm	Angular	W/o support ring bar	With support ring bar	Incl. flange kg	Incl. tied flanges kg	Compression Stiffness kg/cm	Elongation Stiffness kg/cm	Lateral Stiffness kg/cm
32	150	24	77	72	30	20	20	35°	0.8	1.0	3	4	50	75	50
40	150	45	85	80	30	20	20	35°	0.8	1.0	3	5	50	75	50
50	150	46	95	90	30	20	20	35°	0.8	1.0	4	6	50	75	50
65	150	82	110	105	30	20	20	30°	0.8	1.0	5	7	50	75	50
80	150	110	125	120	30	20	20	30°	0.5	1.0	6	8	50	75	60
100	150	163	145	140	30	20	20	25°	0.5	1.0	7	10	65	85	65
125	150	228	170	165	30	20	20	25°	0.5	1.0	8	12	65	85	65
150	150	321	195	190	30	20	20	15°	0.5	1.0	10	16	75	100	75
175	150	435	225	215	30	20	20	15°	0.5	1.0	13	19	75	100	75
200	200	549	245	240	30	20	20	15°	0.3	1.0	15	24	100	150	100
225	150	657	270	265	30	20	20	15°	0.3	1.0	15	24	100	150	100
250	200	766	295	290	30	20	20	10°	0.3	1.0	20	34	100	150	100
300	200	975	345	340	30	20	20	10°	0.3	1.0	24	45	100	150	100
350	200	1290	430	425	30	20	20	10°	0.3	1.0	32	54	100	150	100
400	200	1628	475	470	30	20	20	10°	0.3	1.0	45	71	100	150	100
450	200	2054	532	510	30	20	20	10°	0.3	1.0	52	81	150	200	150
500	200	2546	590	560	30	20	20	10°	0.3	1.0	63	100	150	200	150
600	200	3466	685	655	30	20	20	6°	0.3	1.0	95	140	175	250	175
700	275	4500	820	778	40	25	30	5°	0.3	1.0	125	347	175	250	175
800	275	5600	920	878	40	25	30	4°	0.2	1.0	160	406	200	300	200
900	300	7000	1060	988	40	25	30	4°	0.2	1.0	175	456	200	300	200
1000	300	8500	1160	1088	40	25	30	3°	0.1	1.0	210	490	225	350	225

Note: Maximum values do not apply simultaneously. Stiffness values tolerance: +/- 20%.

## Optional equipment

Vacuum rings (stainless steel), Flame guard, etc. are available.

## Approvals



**Trelleborg Izarra, S.A.U.**

C/ San Vicente, 23 - E01440 Izarra (Alava) - Spain - Tel.: +34 945 437 000 - Fax: +34 945 437 007  
E-mail: izarra@trelleborg.com - E-mail: expansionjoints@trelleborg.com - www.trelleborg.com/expansionjoints

Distributor: